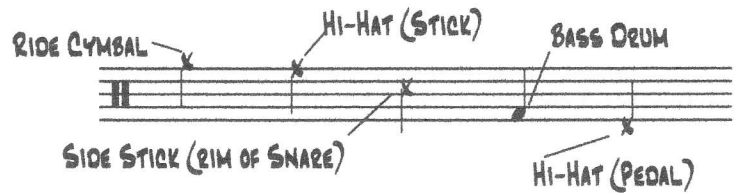


JAZZ DRUM PATTERNS

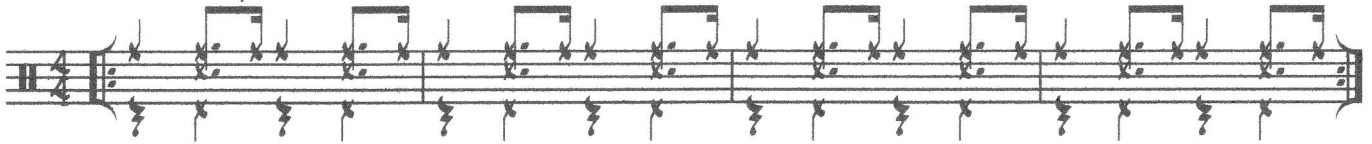
FOR JAZZ BAND AUDITIONS

INSTRUCTIONS:

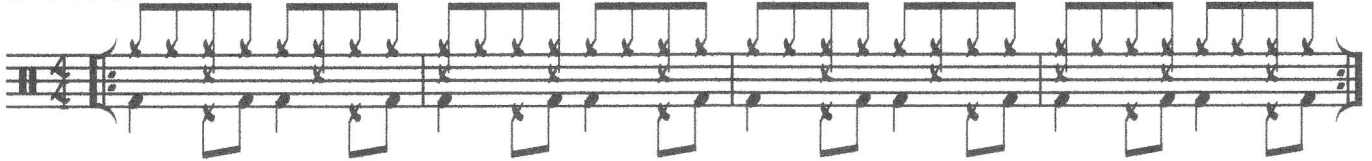
- * REPEAT EACH PATTERN UNTIL STOPPED.
- * STOP BETWEEN PATTERNS.
- * AFTER THE PATTERN IS ESTABLISHED, FEEL FREE TO EMBELLISH IT IF YOU WISH.



1. JAZZ SWING $\text{♩} = 132$



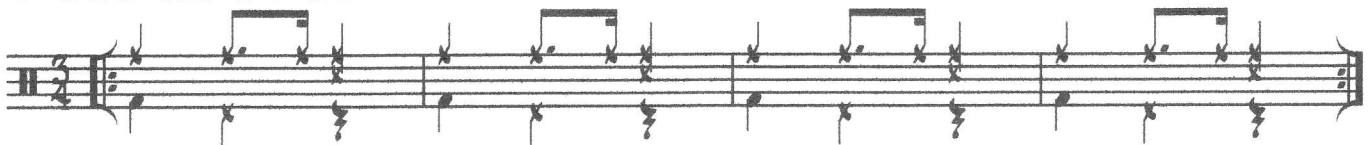
2. BOSSA NOVA $\text{♩} = 116$



3. SALSA $\text{♩} = 180$



4. JAZZ WALTZ $\text{♩} = 132$



5. USING THE JAZZ SWING PATTERN, PLAY THREE MEASURES OF PATTERN THEN A ONE-MEASURE FILL. REPEAT THIS UNTIL STOPPED.

6. USING THE JAZZ SWING PATTERN, PLAY SIX MEASURES OF PATTERN THEN A TWO-MEASURE FILL. REPEAT THIS UNTIL STOPPED.